

# W66AP

AC1750 Wave2 Gigabit Access Point

# W66AP

## AC1750 Wave2 Gigabit Access Point

---

### Product Introduction

Compliant with IEEE 802.11ac Wave2, W66AP is a gigabit dual-band ceiling access point. Powered by 3×3 MU-MIMO technology, a single W66AP can simultaneously communicate with multiple clients, greatly improving throughput and enhancing user experience. W66AP offers reliable high-performance wireless solutions for indoor space with a mass of connected users, such as restaurants, conference rooms and classrooms.



## Key Features

---

- 3×3 MU-MIMO design for wider coverage and higher capacity.
- Gigabit internet connection for ultra-fast experience.
- Up to 1750 Mbps dual-band data rate.
- Centralized management by all IP-COM ACs and enterprise routers.

## Product Features

---



### 3×3 MU-MIMO design

The 3×3 MU-MIMO design generates a concurrent rate of 1750 Mbps, providing a better performance.



### IEEE 802.11ac Wave2

Powered by MU-MIMO technology, a single W66AP can communicate with multiple wireless clients at one time, letting you enjoy higher throughput and better experience.



### Dual-band for more connected clients

W66AP allows clients that support either 2.4 GHz or 5 GHz band, or both to connect to it at the same time, tripling the quantity of connected clients of traditional single-band AP.



### Gigabit internet connection for ultra-fast experience

Up to 1750 Mbps dual-band data rate and the Gigabit Ethernet port offer you ultra-fast internet connections.

## Product Features

---



### Built-in RF for intelligent optimization

Featuring various anti-interference algorithms, the built-in RF enables W66AP to evenly allocate bandwidth resources for multiple users, filter interference, and optimize data rate, offering you a guaranteed signal strength and reliable wireless experience.



### VLAN tagging for SSID

W66AP allows you to set multiple SSIDs and add VLAN tags for SSIDs, thus protecting your network.



### Standard PoE sourcing and DC power supply for easy deployment

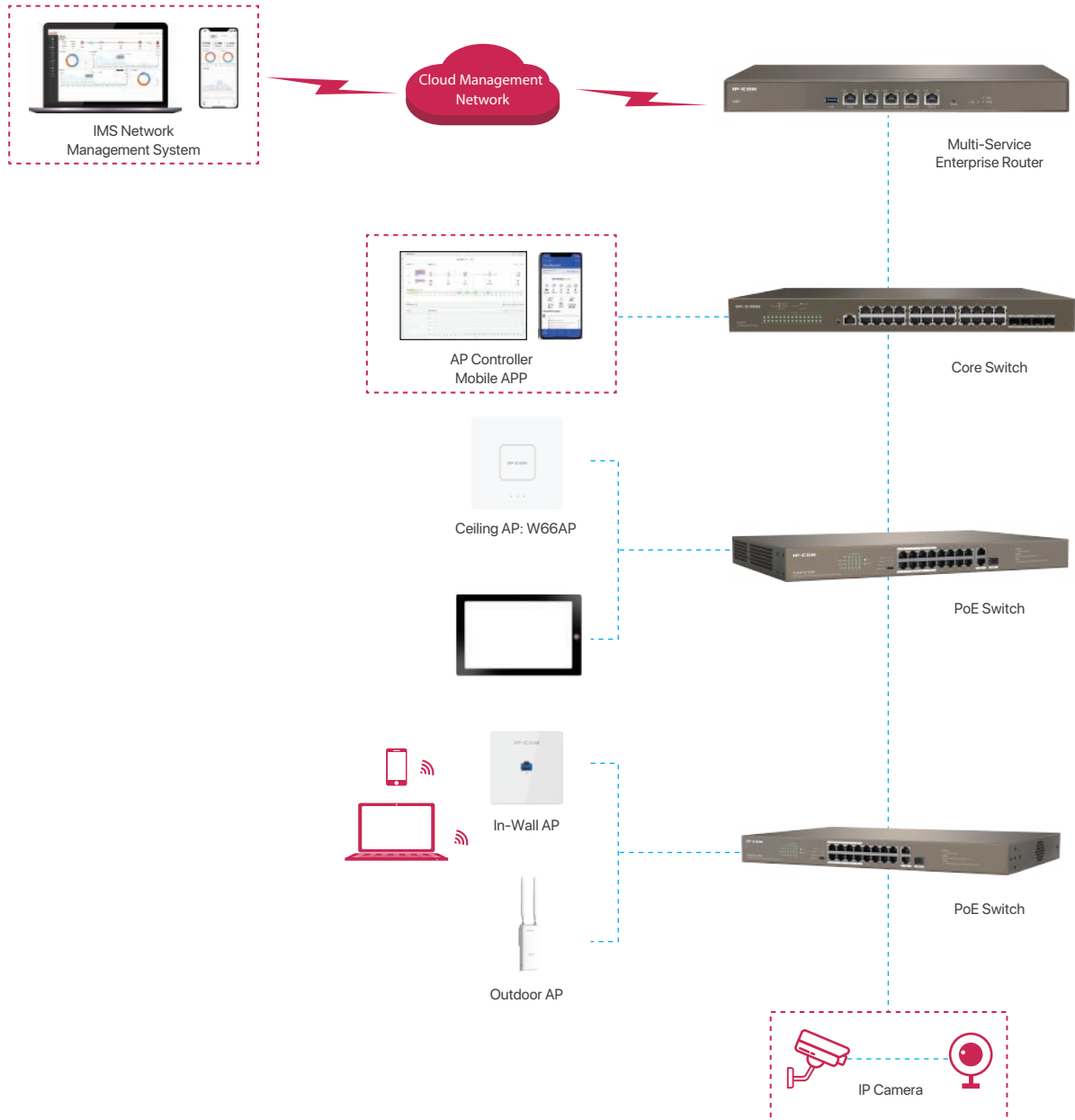
You can use an IEEE 802.3at-compliant PoE sourcing equipment, or a 12V DC power adapter to power on W66AP.



### Centralized management

You are allowed to configure and manage multiple W66AP in a centralized manner through all IP-COM access controllers (AC) and enterprise routers that include AC functionality, and enjoy simple management, configuration and monitoring of all access points.

# Application Scenarios



# Packaging

Product Information	
Model	W66AP
Appearance	Ceiling
Dimensions	178mm* 178mm* 38 mm
Hardware Specifications	
Frequency band	2.400-2.4835 GHz, 5.150 -5.250 GH
Wireless standards	IEEE 802.11a, IEEE 802.11b, IEEE 802.11g, IEEE 802.11n, IEEE 802.11ac
2.4 GHz data rate	1 - 450 Mbps
5 GHz data rate	6 - 1299 Mbps
Ethernet port	1*10/100/1000 Base-TX RJ45 port
Button	1*Reset
LED indicator	1*SYS, 1*2.4 GHz, 1*5 GHz
Max. power consumption	Full-load 13.5W
Power supply standard	IEEE 802.3at PoE, DC 12V 1.5A
Software Specification	
Operating modes	AP, Client+AP
Hide SSID	Supported
Max. No. of SSID	2.4 GHz: 8; 5 GHz: 4
Max. connected clients	2.4 GHz: >200; 5 GHz: >200
WEP	Supported
WPA-PSK	AES/TKIP
WPA2-PSK	AES/TKIP
WPA	Supported
WPA2	Supported
Access control	MAC address-based
Adjustable power transmit	Supported
Frequency analysis	Supported
AP isolation	Supported
Connected clients control	Supported
RSSI threshold	Supported

## Packaging

WMM	Supported
VLAN tagging for SSID	Supported
Antenna gain	6*4 dBi
2.4 GHz Max. output power	23 +/- 1.5 dBm
5 GHz Max. output power	23 +/-1.5 dBm
802.11b RX sensitivity	-93 dBm
2.4 GHz 802.11n (MCS7) RX sensitivity	-74 dBm
5 GHz 802.11a RX sensitivity	-97 dBm
5 GHz 802.11n (MCS7) RX sensitivity	-78 dBm
Prefer 5 GHz	Supported
LED indicator control	Supported
Diagnostics tool	Ping, Traceroute
Scheduled reboot	Supported
Reboot at specified interval	Supported
Management	Web UI
System logs	Supported
Firmware upgrade	Local and AC upgrade
Reboot	Local and AC reboot
Reset	Local and AC reset
Backup configuration	Supported
Restore configuration	Supported

### Operating Environment

Default login IP address	192.168.0.254
Default user name	admin
Default password	admin
Operating temperature	-10°C - 45°C
Operating humidity	(10%-90%) RH, non-condensing
Storage temperature	-30°C - 70°C
Storage humidity	(10%-90%) RH, non-condensing

### Packaging

Certificates	CE\FCC\RoHS
--------------	-------------



**IP-COM NETWORKS CO., LTD.**

Tower E3, No.1001, Zhongshanyuan Road,  
Nanshan District, Shenzhen, China. 518052  
Service: [info@ip-com.com.cn](mailto:info@ip-com.com.cn)  
Inquiry: [marketing@ip-com.com.cn](mailto:marketing@ip-com.com.cn)  
Tel: +86-755-27653089