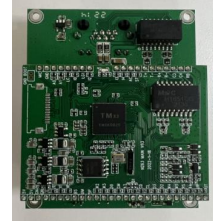


## Tonmind SIP PCB Board SIP-K20-M

1. Two-way intercom communication
2. Support 48K OPUS Audio Codec
3. SIP & ONVIF protocol compatibility
4. Pre-recorded message(WAV/MP3)
5. Alarm: GPIO, HTTP URL
6. MIC and speaker interface
7. Reset and volume control



### Specification:

<b>Protocol</b>	SIP, ONVIF, HTTP, IPv4, DHCP, RTSP, RTP, RTCP, TCP, UDP, ARP, FTP, TFTP, NFS, NTP
<b>Audio Codec</b>	OPUS 48 kHz, MP3 44.1 kHz, G.722 ADPCM 16 kHz, G.711 PCMU 8 kHz, G.711 PCMA 8 kHz
<b>Network Interface</b>	RJ45, 10BASE-T/100BASE-TX
<b>Interface</b>	1*MIC input, 1* Speaker output, 2* IO Alarm input, 1* Reset
<b>Power</b>	PoE or DC 12V
<b>Rated Power</b>	15W
<b>Operating Temperature</b>	-30°C — +60°C
<b>Operating Humidity</b>	5%-85%
<b>Function</b>	Compatible with VoIP devices and ONVIF VMS, support two way communication, pre-recorded messages, schedule play, GPIO in, HTTP control
<b>Application</b>	Speaker, Intercom / Door Phone
<b>Size</b>	65mm * 52mm * 27mm
<b>Others</b>	Support Web Browser Settings, Firmware Upgrade